





4, Woodbridge Close, Macclesfield, Cheshire SK10 5GL

This modern, stylish semi-detached home is spread over three storeys and offers good sized, versatile family accommodation. Situated in the sought after parish of Bollington and in close proximity to the Macclesfield canal this property has much to offer in terms of spacious living accommodation coupled with a superb convenient location.

The property comprises of a lounge and dining room to the lower ground floor whilst to the ground floor there a master bedroom featuring a Juliet balcony with views over the canal together with an en-suite bathroom. There is also a further bedroom and a cloakroom/W.C. To the first floor there are two double bedrooms and a family bathroom. The property benefits from gas fired central heating and uPVC double glazing throughout.

To the front of the property there is a neat lawn bi-sected by a flagged path which is fully enclosed within fenced, hedged and stone wall borders. To the rear, the garden is fully enclosed within stone wall and fenced borders and incorporates a flagged patio, a neat lawn and a tarmac driveway with parking for two vehicles. The rear garden features lovely views towards the Macclesfield canal and beyond.

Bollington is a popular location being a town which still feels like a village. It has an active community which ensures there are plenty of volunteers to support many events each year. It also hosts the Bollington Festival and has many clubs and societies. There are several good local primary schools with pupils then transferring to secondary schools in Macclesfield. There are many opportunities for walking and cycling and an increasing number of local restaurants, bars and independent food outlets.

Macclesfield is just 3 miles away with access to good transport links, including national motorways, major roads and train networks with direct access to London. Manchester International Airport is only ten miles from Bollington by road.

Proceed out of Macclesfield along the Silk Road towards Bollington and at the second roundabout, take the third right towards Bollington. Proceed into the village and turn right just after the library into Hurst Lane. Follow the road over the canal bridge and take an immediate left into Woodbridge Close.

Viewing: By appointment with Holden and Prescott 01625 422244

Ground Floor

Courtesy light.

Entrance Hall

Composite front door with glazing inset. Spindle balustrade to the staircase. uPVC double glazed window.

Master Bedroom

12'07 x 11'04

Recessed spotlighting. uPVC double doors opening onto a toughened glass Juliet balcony. T.V. aerial point.

En-suite

The suite comprises a fully tiled cubicle with rainfall shower head over and additional shower attachment, a wash basin with mixer tap set within a vanity unit with storage below and a low suite W.C. Shaver point. Extractor fan. Partially tiled walls. Tiled flooring. Recessed spotlighting. uPVC double glazed window. Chrome heated towel rail.

Bedroom Four/Study

12'04 x 8'09

uPVC double glazed windows. T.V. aerial point. Double panelled radiators.

Cloakroom/W.C.

Wash basin with mixer tap. Low suite W.C. Recessed spotlighting. Extractor fan. Partially tiled walls. Tiled flooring. uPVC double glazed window. Chrome heated towel rail.

Lower Ground Floor

Staircase

Handrail and spindle balustrade to the staircase. Double panelled radiator.

Dining Kitchen

15'08 x 12'05

Single drainer stainless steel sink unit with mixer tap and base units below. An additional range of matching base and eye level units with contrasting work surfaces extending to a breakfast bar. Fitted shelving. Integrated oven. Integrated four ring induction hob with glass splashback and extractor hood over. Integrated dishwasher. Integrated fridge freezer. Integrated microwave. Plumbing for washing machine. Recessed spotlighting. Tiled flooring. Recessed spotlighting. uPVC double glazed window.

Lounge

15'11 x 11'04

Understairs storage cupboard. Recessed spotlighting. Oak flooring. T.V. aerial point. uPVC double doors and uPVC single door both opening onto the rear garden. Double panelled radiator.

First Floor

Loft access. Spindle balustrade to the staircase.

Bedroom Two

16'02 x 10'01

uPVC double glazed windows. T.V. aerial point. Double panelled radiators.

Bedroom Three

16'03 x 11'03

Built-in storage cupboard housing the Viessmann combination style condensing boiler. T.V. aerial point. Two Velux windows. Double panelled radiator.

Bathroom

The white suite comprises a panelled bath with screen and electric shower over, a wash basin with mixer tap and a low suite W.C. Shaver point. Partially tiled walls. Tiled flooring. Recesses spotlighting. Extractor fan. uPVC double glazed window. Chrome heated towel rail.

Outside

Gardens

To the front of the property there is a neat lawn bi-sected by a flagged path which is fully enclosed within fenced, hedged and stone wall borders. To the rear of the property the garden is fully enclosed within stone wall and fenced borders and incorporates a flagged patio, a neat lawn and a tarmac driveway with parking for two vehicles. The rear garden features lovely views towards the Macclesfield canal and beyond. Included within the sale is a timber garden shed.

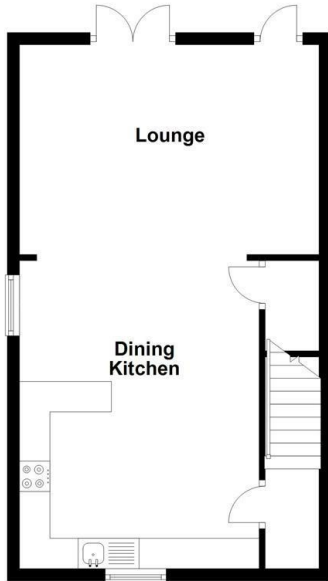
Maintenance Charge

There is a monthly charge of £140.00 per calendar month for residents of woodbridge close. This covers all ground work and water works.

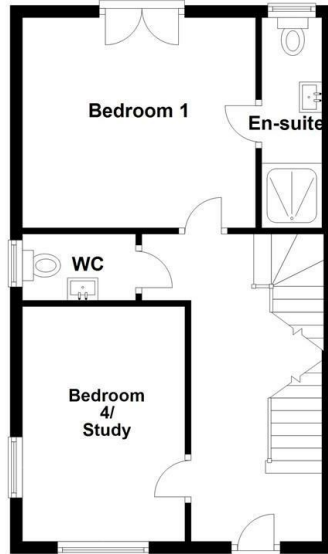
£474,950

HOLDEN & PRESCOTT

Lower Ground Floor



Ground Floor



First Floor

